

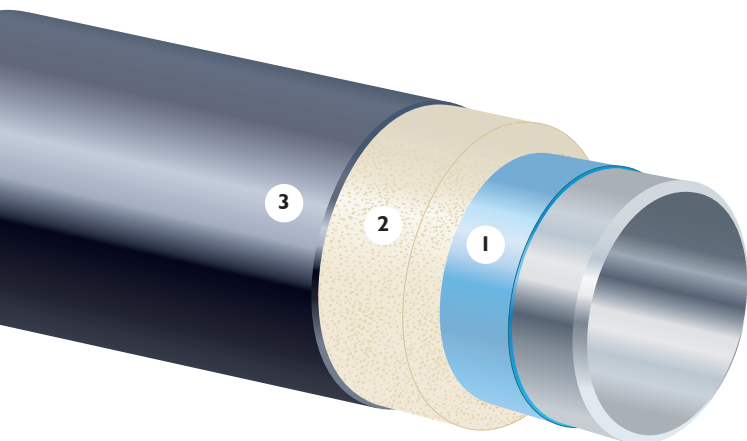
Insul-8®

Moulded or Spray Applied PU Foam Insulation



FLOW
ASSURANCE

PRODUCT DATA SHEET



1. Corrosion Resistant Coating
2. Thermal Insulation Layer
3. Outer Jacket - Protective Topcoat

Product Description

Insul-8® Systems are moulded and/or spray applied polyurethane foam coatings developed for external protection of buried or above ground steel and plastic pipe. **The polyurethane foam provides a cost-effective alternative for preventing hydrate formation in gas pipelines, maintaining viscosity of hot oil lines and providing freeze protection for water and sewage lines.**

Applications



Oil & Gas
Pipelines



Small Diameter
Pipelines



Large Diameter
Pipelines

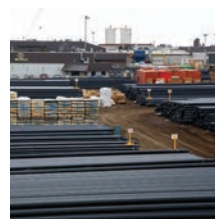


Waterworks
Pipelines

Related Standards and Specifications

- ISO 9001:2008

For additional standards and specifications with which this product complies, please contact your Bredero Shaw representative. In Canada, consult Shaw Pipe.



Provides a Water Tight Barrier

Prevents Hydrate Formation in Gas Lines

- Insul-8® polyurethane foam reduces heat loss to prevent hydrate formation in gas pipelines and helps to maintain viscosity in hot oil lines.

Available with a Variety of Anti-Corrosion Undercoat Systems

- Can be used with a variety of anti-corrosion coatings and is available in a variety of insulation thicknesses to meet specific project requirements.

Protection of Water and Sewage Lines from Freezing

- An optional design for further protection against temperature loss is the application of heat tracing channels.

High Operating Temperature Capabilities

- For use where high operating temperatures are attained, and high shear strength bond is required. Insul-8® is available in a range of maximum operating temperatures.

Global Availability

- High capacity within the Bredero Shaw plant network allows the client to benefit from single source advantages, providing more cost effective management of pipe coating needs.

Features & Benefits

Insul-8®

Moulded or Spray Applied PU Foam Insulation

Typical Plant Capabilities and Product Properties

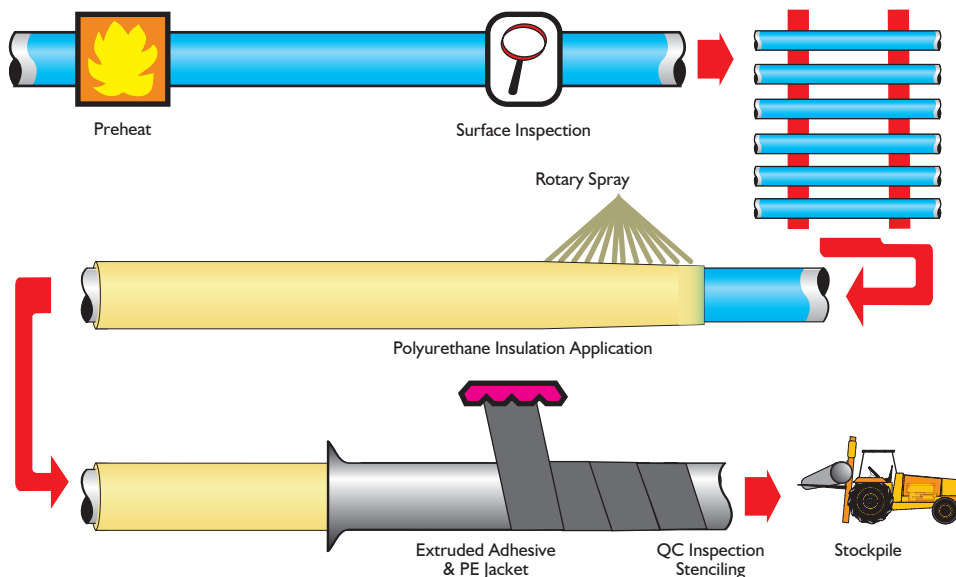
Capability/Property	Insul-8®
Minimum Pipe Diameter	50 mm (2")
Maximum Pipe Diameter	600 mm (24")*
Minimum Pipe Length	4.9 m (16')
Maximum Pipe Length.....	25.0 m (80')
Minimum Operating Temperature	-40°C (-40°F)
Maximum Operating Temperature.....	110°C (230°F)

Values shown are typical and may vary from plant to plant. Consult Bredero Shaw for special requirements. In Canada, consult Shaw Pipe. * Larger diameters may be possible.



Insul-8®_rev021

Product Application Process



Plants

North America

Edmonton, Alberta
Camrose, Alberta
Calgary, Alberta

Asia Pacific

Kuantan, Malaysia

About Bredero Shaw

Bredero Shaw is the global leader in pipe coating solutions. With more than 80 years of experience, the largest team of dedicated pipe coating professionals, the most extensive network of strategically located plants worldwide and with proven innovative coating technologies, the company has protected more pipelines in virtually every environment and operating condition than anyone in the industry.

Bredero Shaw offers technologically advanced solutions for anti-corrosion coatings, protective and weight coatings, thermal flow assurance coatings, internal coatings, custom coatings and field joints for both onshore and offshore applications. This broad range of products and services provides Bredero Shaw with the unique capability to service the full spectrum of pipeline protection and flow assurance requirements. Consult your Bredero Shaw representative for your unique project requirements.

HEAD OFFICE & AMERICAS

Bredero Shaw
3838 N. Sam Houston Pkwy E.
Suite 300
Houston, Texas
77032-3400, USA
Phone: +1-281-886-2350
solutions@brederoshaw.com

EUROPE, MIDDLE EAST, AFRICA & RUSSIA

Bredero Shaw
Lakeside House
1 Furzeground Way
Stockley Park, Uxbridge
UB11 1BD, United Kingdom
Phone: +44-208-622-3071
EMAR@brederoshaw.com

ASIA PACIFIC

Bredero Shaw
101 Thomson Road
#17-01/02 United Square
Singapore 307591
Phone: +65-6732-2355
asiapacific@brederoshaw.com

Regional Offices